



Cabinet 60 POLE 2C susp. Mint matte Navy board

Description

- Wall hung basin unit 2 drawers. 60 wide
- Marine board, Mint Matte finish
- Interior of the cabinet and drawers Anthracite color
- Cabinet made of 19 mm thick boards
- System for hanging the cabinet with safety lock
- Legs (optional)
- Towel rack (optional)
- Drawbox (optional): Internal drawer divider

Suggested text for prescription

Wall hung basin unit, POLE model with 2 drawers, wood Marine Board, Mint Matte finish. Ultra-slim metal drawers, with total extraction, silent closing system and 3 adjustment settings, no tools required. Dimensions 60 wide x 45 deep x 54 high (cm)

Drawers

- Metal drawers with silent closing system and 3 adjustment settings, lateral and depth. No tools required
- Full-extension drawers and soft-close system
- Ultra-slim 2 mm thick drawers
- Upper drawer 12 cm high. With siphon groove
- Bottom drawer 15 cm high
- Drawer base made of Marine Board

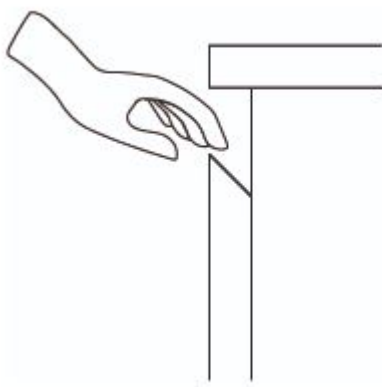
Technical characteristics

Material: Marine Board

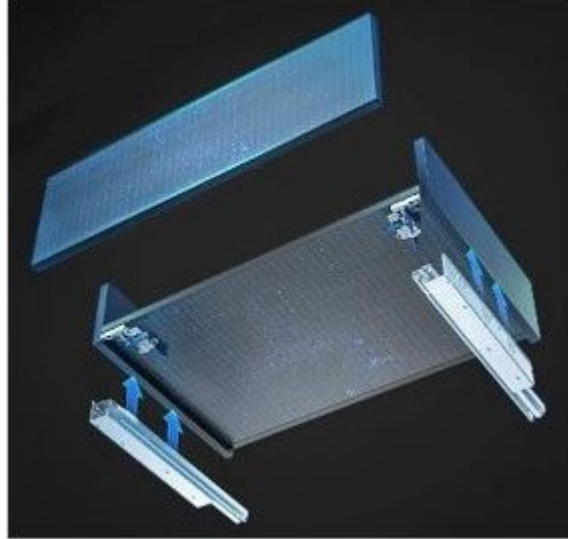
Finishing: Mint Matte

Dimensions: 60 wide x 45 deep x 54 high (cm)

HANDLE options for NATURE WOOD colours

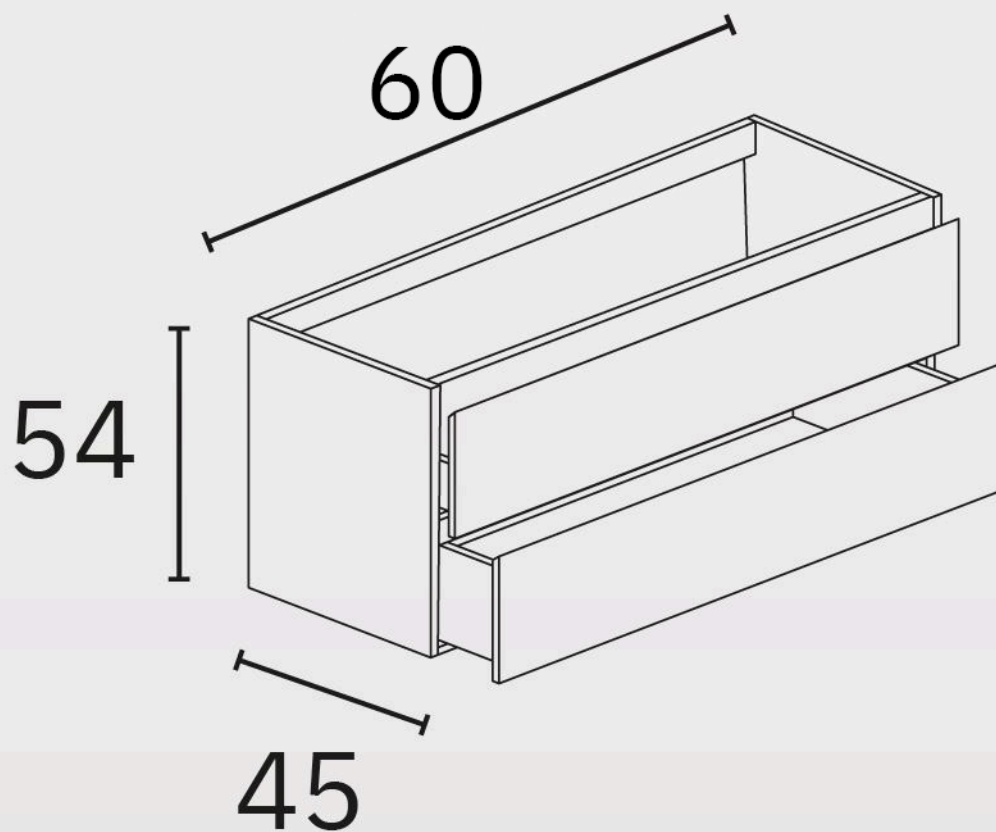


Drawer Details





Dimensional drawing



Ctra. Laureà Miró, 385-387
08980 | Sant Feliu de Llobregat,
Barcelona - Spain
T. +34 934 742 423
F. +34 934 743 548
nofer@nofer.com
www.nofer.com

RELATED
PRODUCTS



PL080.V



PL100.V

These specifications may be modified and/or amended due to manufacturing requirements.