

Furniture 60 POLE 2C susp. Cobalt matt Marine Board



Description

- Suspended washbasin cabinet 2 drawers. 60 cm wide
- Table top Marino, COBALT Matte finish
- Interior of the cabinet and drawers Anthracite color
- Cabinet made of 19 mm thick boards
- System for hanging the cabinet with safety lock
- Legs (optional)
- Towel rack (optional)
- Drawbox (optional): It stops inside drawer

Suggested text for prescription

Wall hung basin unit, POLE model with 2 drawers, wood Marine Board, COBALT Matt finish. Ultra-slim metal drawers, with full extraction, silent closing system and 3 adjustment settings, no tools required. Dimensions 60 wide x 45 deep x 54 high (cm)

Drawers

- Metal drawers with silent closing system and 3 adjustment settings, lateral and depth. No tools required
- Full-extension drawers and soft closing system
- Ultra-slim drawers 2 mm thick
- Upper drawer 12 cm high. With recess for siphon
- Bottom drawer 15 cm high
- Drawer base in marine board.

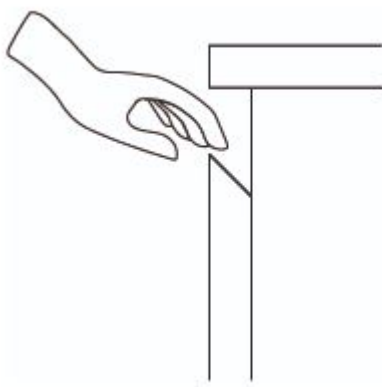
Technical characteristics

Material: Marine Board

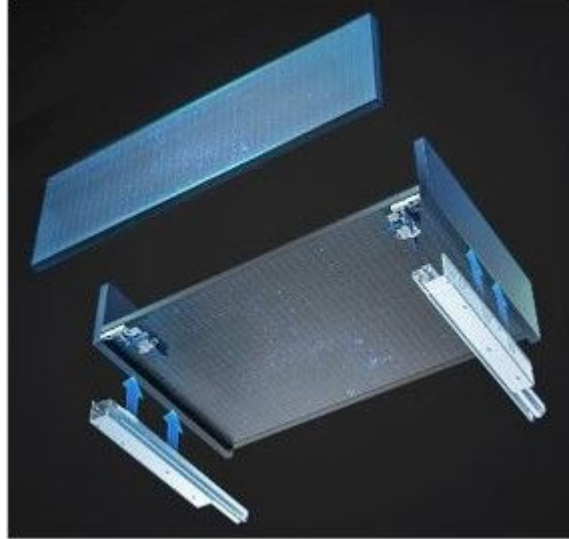
Finishing: COBALT Matte

Dimensions: 60 wide x 45 deep x 54 high (cm)

HANDLE options for MATT OR GLOSS LACQUERED colours

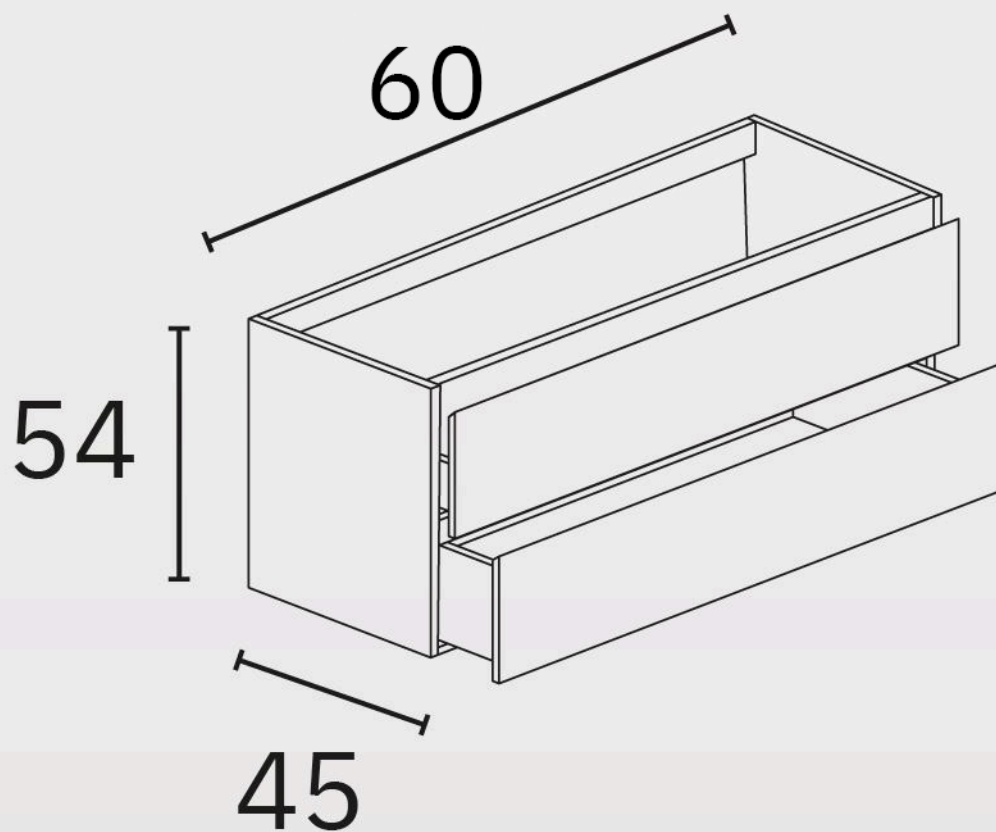


Drawer Details





Dimensional drawing



Ctra. Laureà Miró, 385-387
08980 | Sant Feliu de Llobregat,
Barcelona - Spain
T. +34 934 742 423
F. +34 934 743 548
nofer@nofer.com
www.nofer.com

RELATED
PRODUCTS



PL080.Z



PL100.Z

These specifications may be modified and/or amended due to manufacturing requirements.